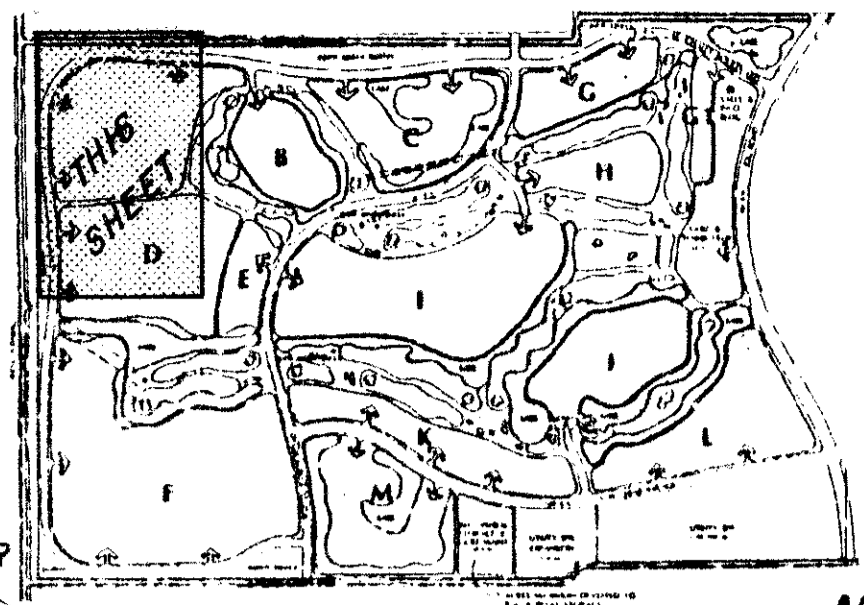


DRAWING NUMBER
55/17

DRAWING NUMBER

DRAWING NUMBER

DRAWING NUMBER



ABERDEEN - PLAT NO. 2

A PORTION OF A (P.U.D.)

SECTIONS 15 & 16, TOWNSHIP 45 SOUTH, RANGE 42 EAST

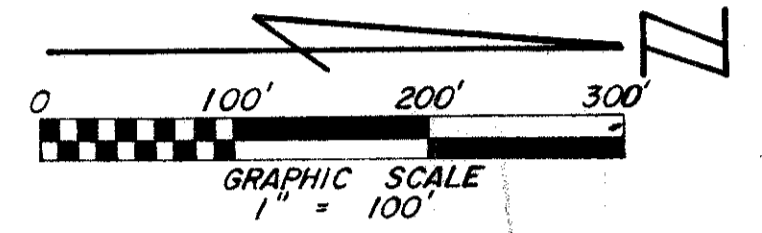
NOT PLATTED ACREAGE

PALM BEACH COUNTY, FLORIDA - AUG., 1986

BEING A REPLAT OF A PORTION OF BLOCK 47 AND THE SCHOOL TRACT LYING IN SECTION 16, TOWNSHIP 45 SOUTH, RANGE 42 EAST, PALM BEACH FARMS CO. PLAT NO. 3, RECORDED IN PLAT BOOK 2, PAGE 49, PUBLIC RECORDS OF PALM BEACH COUNTY, FLORIDA

17

STATE OF FLORIDA
COUNTY OF PALM BEACH } ss
This Plat was filed for record at ____ M.
this ____ day of ____
19 ____, and duly recorded in Plat Book No. ____
on page ____
JOHN B. DUNKLE, Clerk Circuit Court
By _____, D.C.



WEST 1/4 CORNER SECTION 16 P.R.M. N 1° 45' 26" E 1322.20' WEST LINE - SECTION 16 P.R.M. 5288.80' 1222.20' N.W. CORNER SECTION 16 P.R.M. 1000' 16

KEY MAP
NOT TO SCALE

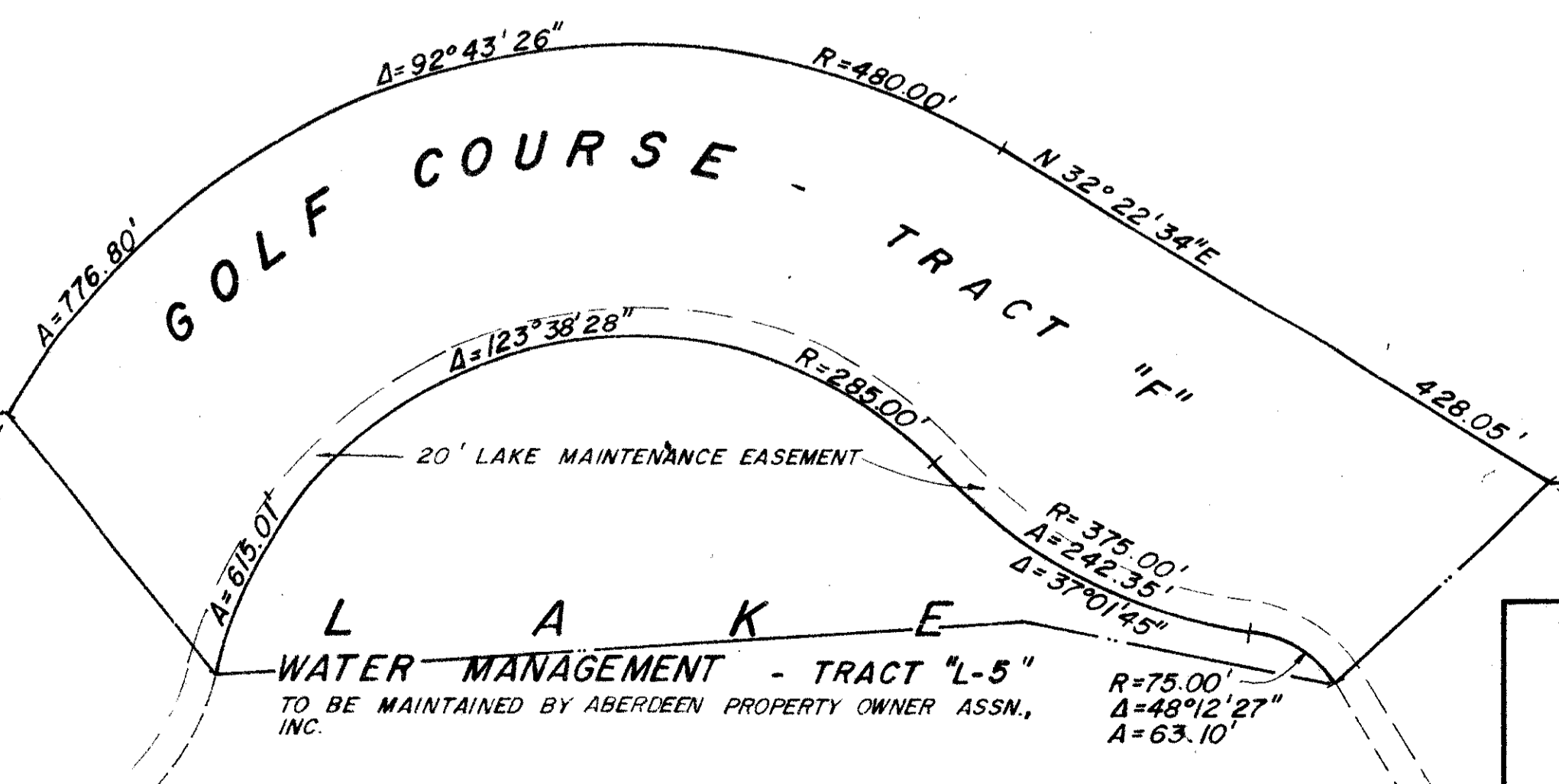
SEE SHEET NO. 8

THIS AREA TO BE REPLATTED PRIOR TO DEVELOPMENT

MATCH LINE

MATCH LINE

MATCH LINE



1189.76' 4875.16' 4753.86' CANAL L-20 (100' R/W) NORTH LINE - SECTION 16 1188.46' S 88° 59' 12" E 100.00' P.R.M. 100' 48' W 950.16' L.W.D.D. 950.16' S 89° 59' 12" E

55/17
0270-306

ROSSI AND MALAVASI ENGINEERS, INC. WEST PALM BEACH, FLORIDA		ABERDEEN PLAT NO. 2 IN 12 SHEETS SHEET NO. 7	
Date	AUGUST, 1986	Designed	T. J. CURBELO
Drawn	D. FREDERICK	Scale	1" = 100'
Checked		Job No.	
Approved		File No.	
			Sheet 7 of 12

SEE SHEET NO. 6